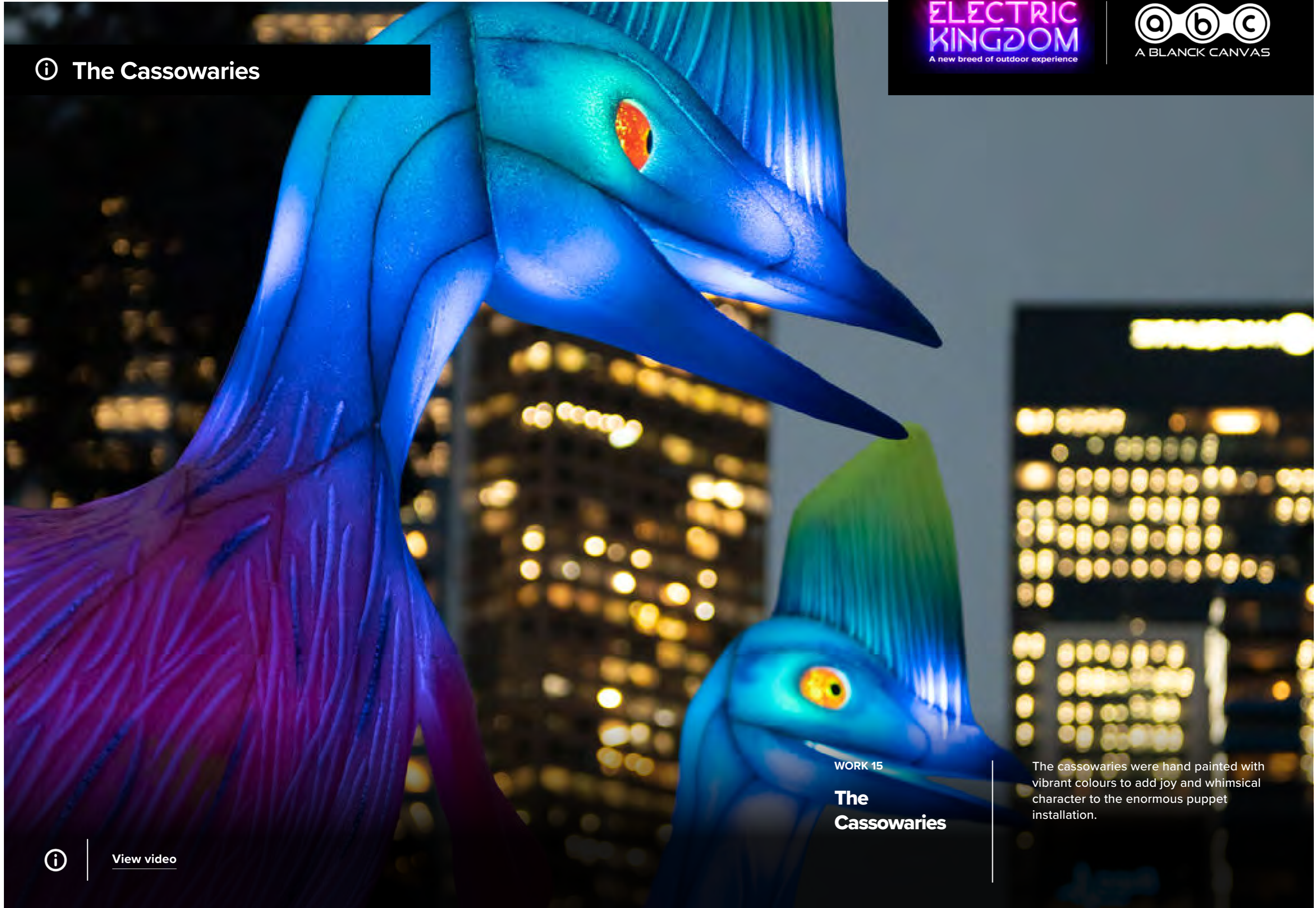


i The Cassowaries



WORK 15

**The
Cassowaries**

The cassowaries were hand painted with vibrant colours to add joy and whimsical character to the enormous puppet installation.



[View video](#)

① The Cassowaries



**ELECTRIC
KINGDOM**
A new breed of outdoor experience

a b c
A BLANCK CANVAS

To add a whimsical twist to the two 4.5-metre-high Cassowaries, we've adorned them with enormous Air Jordan sneakers. Given the Cassowaries reputation for using their powerful feet and sharp claws, this unexpected combination brings an element of fun and surprise to the experience.

🔨 Construction & Fabrication

The installation consists of two large-scale foam sculpted Cassowaries that can be separated or reconfigured depending on the space. They are internally lit with a dynamic preprogrammed LED lighting system. The giant installation stands at 4.5 metres tall, and a total of 12 metres wide, not including the space between the two Cassowaries. A steel frame lies within the bodies, with the weight being distributed through the base.

👤 The Team

There are 5 members of The Cassowarie's team, including:

- 3 crew for build and dismantle
- 1 technical supervisor for the duration.
- 1 lighting technician

Our team can liaise with lighting/sound designers or performers to facilitate the customisation of The Cassowarie's use for any type of show.



**ELECTRIC
KINGDOM**
A new breed of outdoor experience

a b c
A BLANCK CANVAS

i The Cassowaries

🎮 Performance

- The lighting sequence is pre-programmed to rolling waves of colour which progress through the Giraffes' entire body. There are hundreds of LED lights fitted throughout the interior, creating an impressive impact which is favoured when performed in a darker environment.
- Soundscape with sound system
- A-frame signage will be situated in front of the Giraffe enclosure

🔧 Technical Requirements

- The street or surface gradient should be a flat surface. Access for forklifts must be considered during bump in and out.
- Currently 2400 watt (Can be converted).
- Power Station for the lighting within moderate reach of installation
- Cassowaries are 4.5 metres all, 6 metres long each
- Minimum 8-metre-wide area with a minimum 6-metre-high clearing
- Minimum 2m wide path with a minimum 2.5m high clearing for public access in front of installation.
- Surface must be able to support 2 x 1500kg weight (puppet and base).
- Our team will attend any pre-show sound checks and test runs as deemed necessary to fulfill the performance requirements of the event.





WORK 16

The Cassowaries

Children delight in playing around the brightly colored giant birds, relishing the opportunity to climb all over their playful, oversized Nike shoes.