



Information sheet

The Oryxes

Operated by two skilled puppeteers, each Oryx moves with precision and grace. Lightweight yet sturdy aluminum frames attached to backpacks allows for fluid movement, ensuring a mesmerising spectacle.

Prepared by:
Joe Blanck

*Founder and
Creative Director,
A Blanck Canvas*

Each of the four graceful Oryxes made a stunning appearance at the Ithra Museum in 2024. Inspired by our renowned National Day 47 Oryxes, these intricate suit puppets captivated audiences as they elegantly roamed the grounds, interacting with children and grazing on nearby shrubs.



The Oryxes

Construction & Fabrication

Operated by two skilled puppeteers, each Oryx moves with precision and grace. Lightweight yet sturdy aluminum frames attached to backpacks allows for fluid movement, ensuring a mesmerising spectacle.

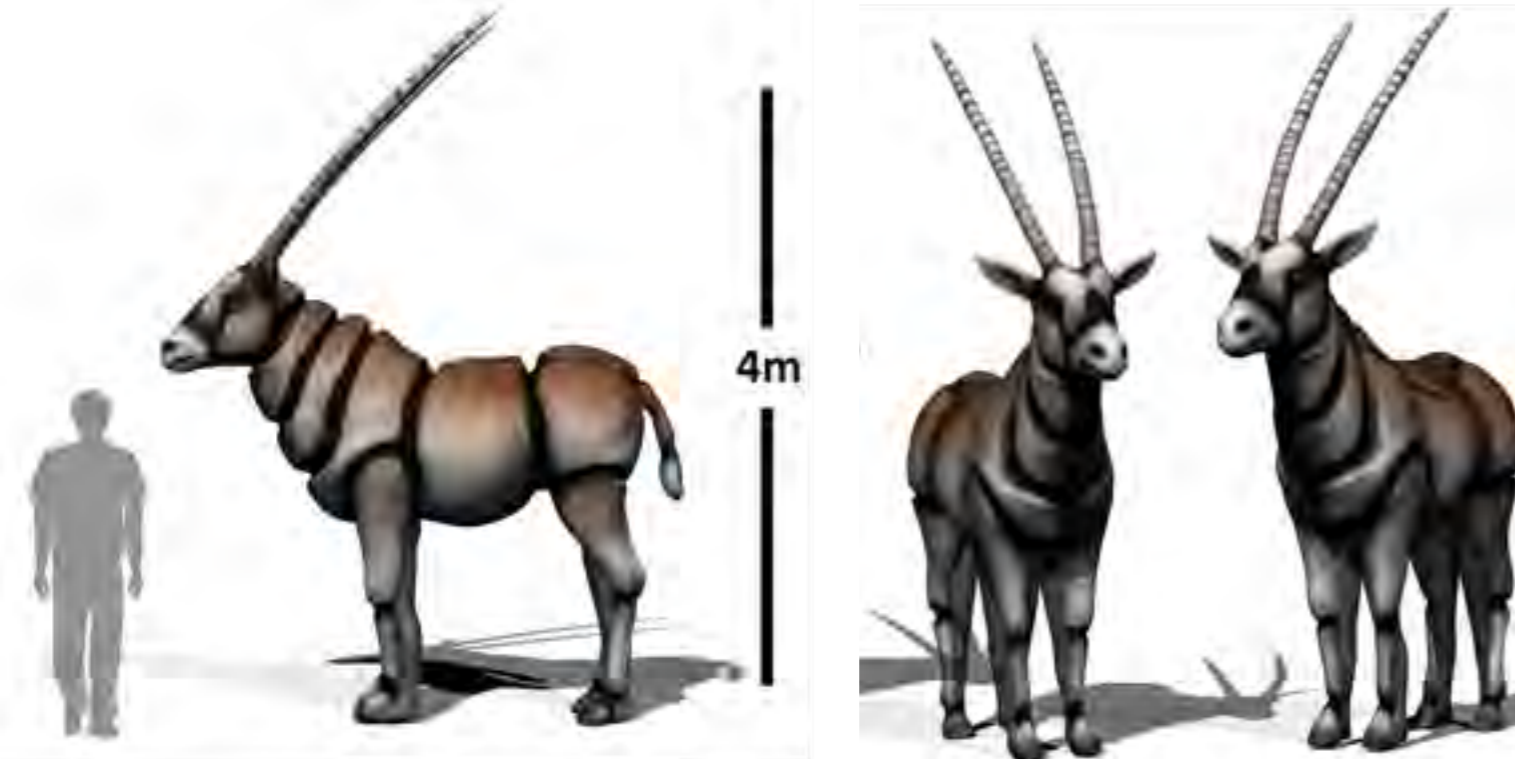
Hand-sculpted from EPE foam and adorned with aluminum skeletons, the Oryxes boasts lifelike movements as they traversed the park. Internal rod mechanisms facilitates realistic head movements, while LED lights illuminated their path, enhancing their allure.

The Team

There are 10 members of The Oryxes team, including:

- 8 professional puppeteers
- 1 technical specialists
- 1 puppetry director

A minimum 30-minute break for our puppeteers is required after each performance, with a space where they can stretch and warm up. A Blanck Canvas has skilled educators who can equip and train local artists to perform The Oryx in your region.



🎭 Performance

- Each performance of The Oryx runs for 35 minutes. Adjustable to each event.
- There are hundreds of LED lights fitted throughout the interior, creating an impressive impact which is favoured when performed in a darker environment.
- Walking at an elegant pace, The Oryx can cover up to 1km distance in the performance time, without audience interaction stops.
- The puppeteers will assess the audience for interaction possibilities. The Oryx may look in certain directions or at a certain crowd of people, it can eat the nearby shrubs, interacting with the crowd.
- A-frame signage will be situated in front of the Oryxes home, where they are stationary on stands.

🔧 Technical Requirements

- The street or surface gradient should be easy to moderate. Surface cannot be soft, e.g. sand, mud, thick grass; if path/road surfaces can't be used
- Minimum 2m wide path with a minimum 4m high clearing
- Charging Station to power batteries in-between performances; Can perform for up to 2 x 30minute performances on one charge. The Oryx can swap out batteries to increase performance time but this must be done safely between shows
- Length - 4.5m, Width - 1.5m, Height - 4m
- A storage area/ green room where the Oryxes can be secured from the weather and be safely put to charge



The Oryxes



To discuss how you can work with us to deliver your event, please get in touch for an obligation-free quotation.

Contact:
Joe Blanck

*Founder and
Creative Director,
A Blanck Canvas*

+ 61 4 10 654 601
+ 61 3 90412300

info@ablanckcanvas.com
ablanckcanvas.com



Case Study